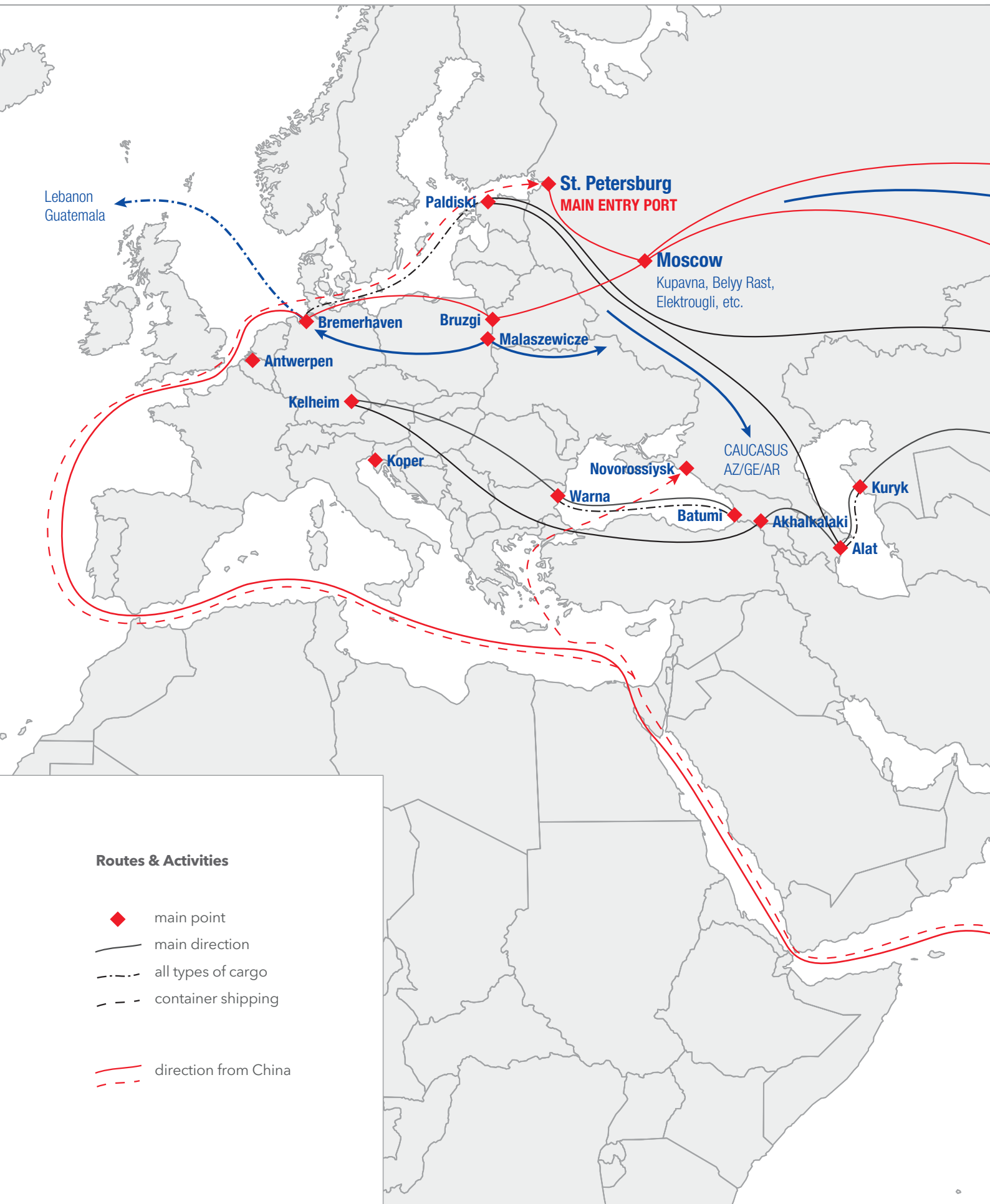
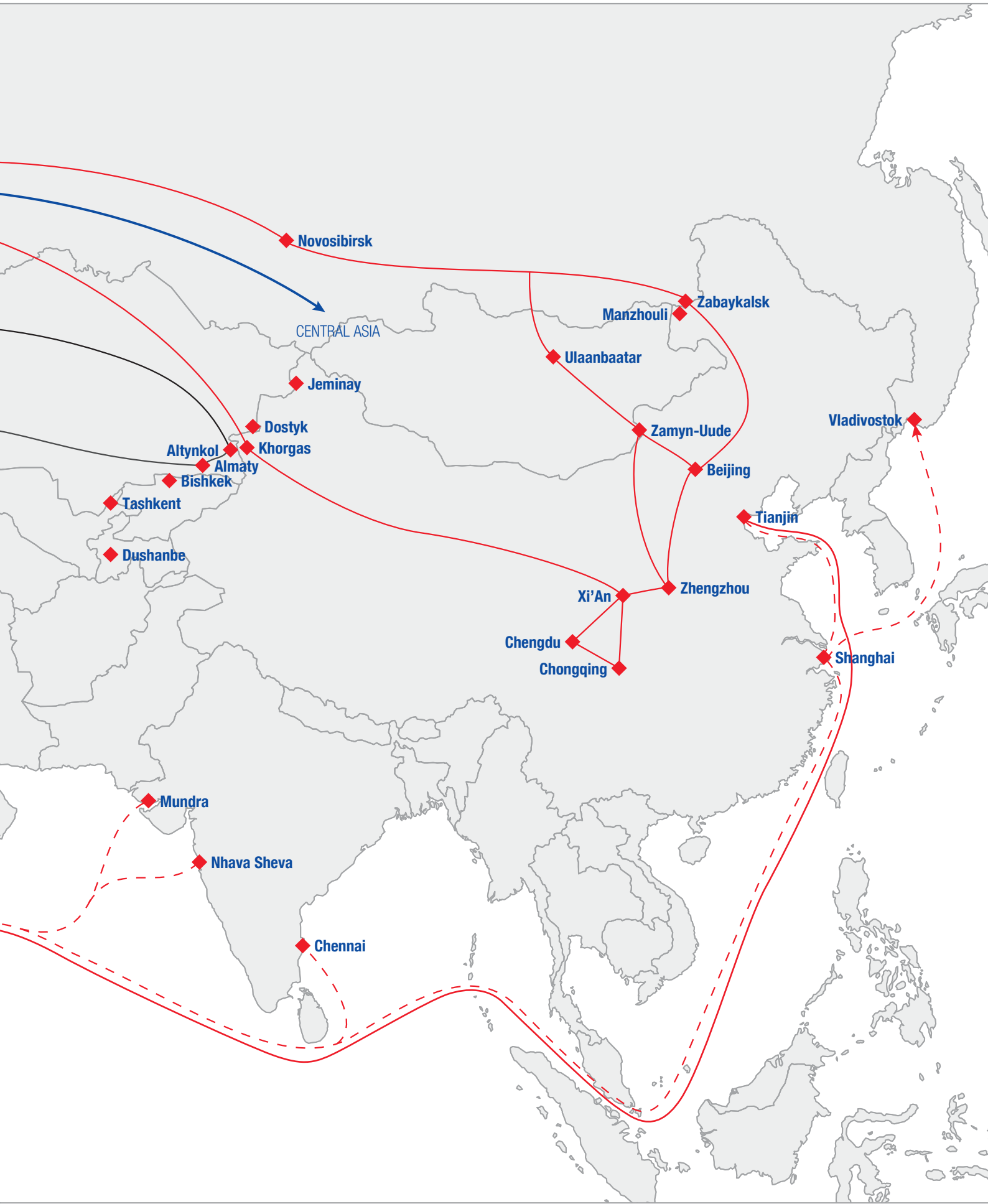


YOUR GATEWAY TO RUSSIA

WE CARE ABOUT YOUR CARGO









BLG LOGISTICS

OUR SEAPORT TERMINALS AS GATE TO THE WORLD

- 2.484.000 m² of space
- Storage capacity of 98.500 vehicles
- Rail Access, berths, technical centers, RoRo, value-added services

OUR INLAND TERMINALS AS PERFECT INFRASTRUCTURE

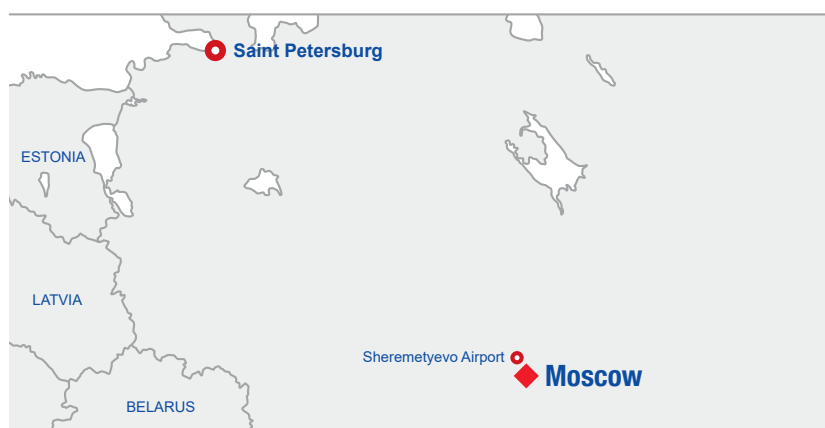
- 1.321.000 m² Surface
- Storage capacity of 57.500 vehicles
- Rail Access, berths, technical centers, RoRo, Value-added services





BLG SPB AUTO TRANSPORTATION - MILESTONES

| | |
|-----------------------|--|
| Office: | Moscow |
| Truck station: | Sheremetyevo area |
| Own fleet: | 50 trucks |
| Subcontractors fleet: | up to 100 trucks |
| IT: | Inhouse IT department |
| Staff: | 75 employees |
| Customs: | Customs carrier status (license No. 10000/0643) |



2012

BLG Logistics
acquires 100%
of Car Logistic

2013

10 new trucks
and trailers

2014

10 new trucks
and trailers

2018

20 new trucks
and trailers

2020

20 new trucks
and trailers
+ 2 evacuators

2022

Sale of 20
old trucks



Running Fleet
of min 100 trucks
and trailers



PARALLEL IMPORT (car price under 50,000 €)*

FOR LEGAL ENTITIES WITH REGULAR VOLUMES

- Full service transportation from Europe to Russia
- Documents consulting & assistance
- Customs clearance

* Carriage subject to the compliance fulfillment with the sanction restriction valid at the day of shipment for used cars with prior approval of the legal committee

SPECIAL SINGLE CARS TRANSPORTATION



EVACUATOR

LF = 2/3

Located in Moscow, can be used for regional delivery



CLOSED EVACUATOR

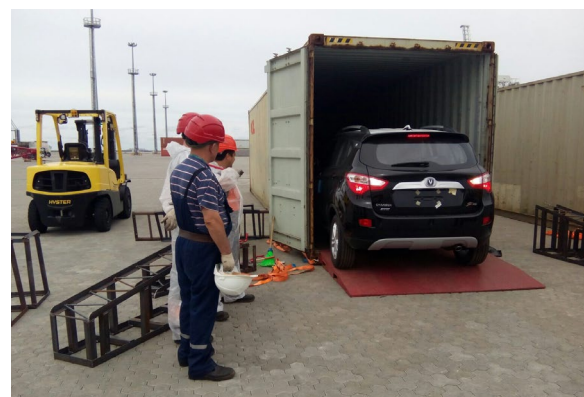
LF = 2

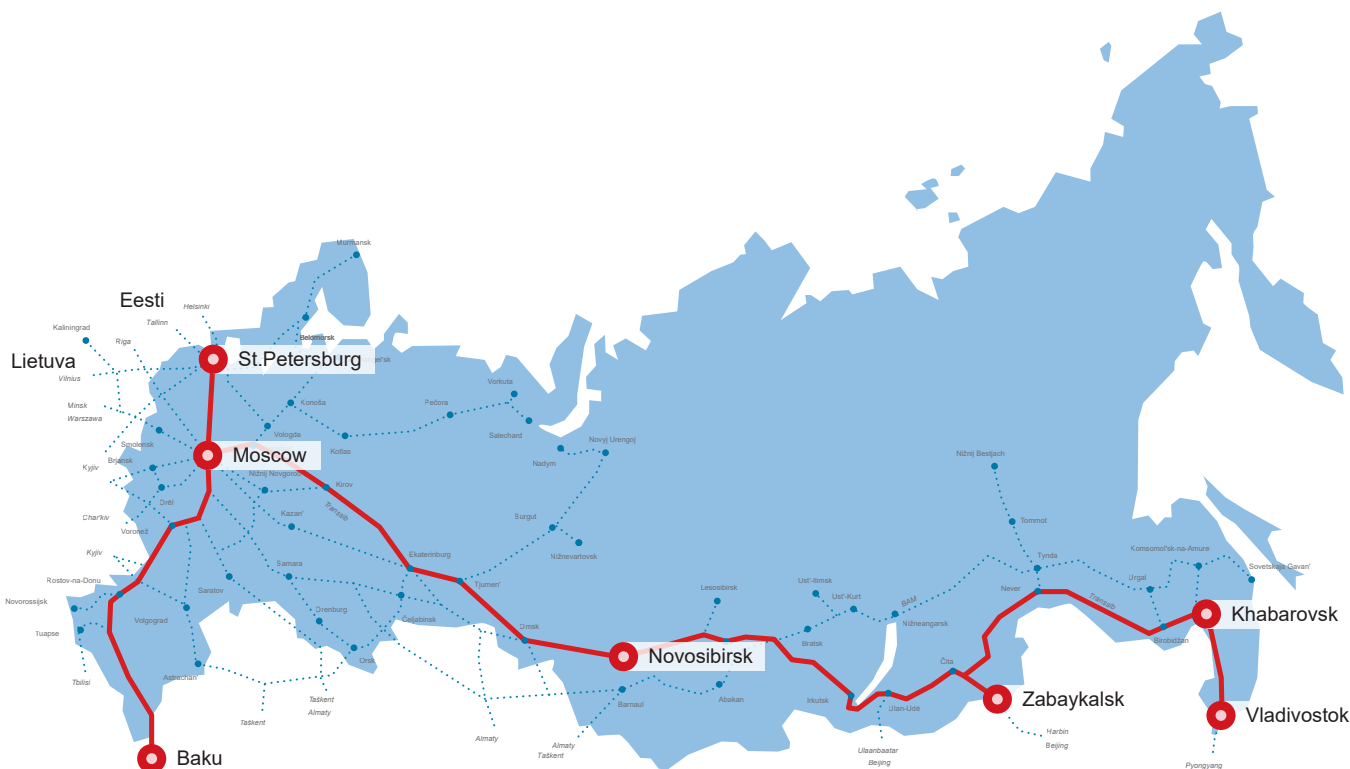
Located in Moscow, can be used for regional & international delivery



UNSTUFFING OF CARS FROM CONTAINERS IN PORT OF ST.PETERSBURG (BRONKA, FCT, CTSP)

- reliable & quick service
- longterm partnerships with the main port terminals of St.Petersburg
- independent survey during unstuffing

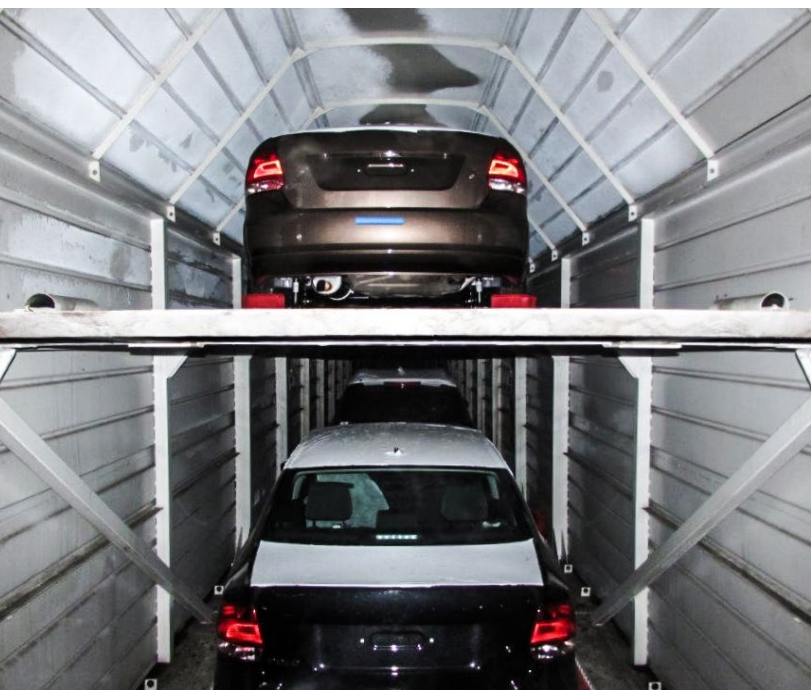




RAIL TRANSPORTATION

Weekly Rail Service from St.Petersburg and Moscow to Siberia and Far East.
Transit time approximate 7 days Siberia and 14 days Far East.

Rail Transportation from St. Petersburg to Baku, transit time - 10 days, min load - 10 cars





CUSTOMS DEPARTMENT

WHOLE RANGE OF CUSTOMS SERVICES

- Trading services (purchase, transport, customs clearance as a package)
- Licensed Customs Broker (license No. 1287)
- Customs Carrier (Easy & Fast Transit)
- Issuing of transit declaration
- Consultancy services in the field of customs legislation
- Expert Experience in import and export customs clearance of Cars and Machinery
- Carnet ATA

MAIN FOCUS

- New cars, trucks and machinery
- Spare parts
- CKD/SKD shipments
- Transit declarations

GALINA BASKO

HEAD OF CUSTOMS CLEARANCE & SUPPORT DEPARTMENT

Gapsalskaya street 5, section B, office 610
198035, Saint Petersburg, Russia

Tel. Russia: +7 (812) 495 88 40
Mob. Russia: +7 (911) 161 83 01
g.basko@blgmsk.ru





GENERAL CARGO

PORT HANDLING / PORT FORWARDING:

- High & Heavy
- Containers
- Ro-Ro Cargo
- Groupage cargo

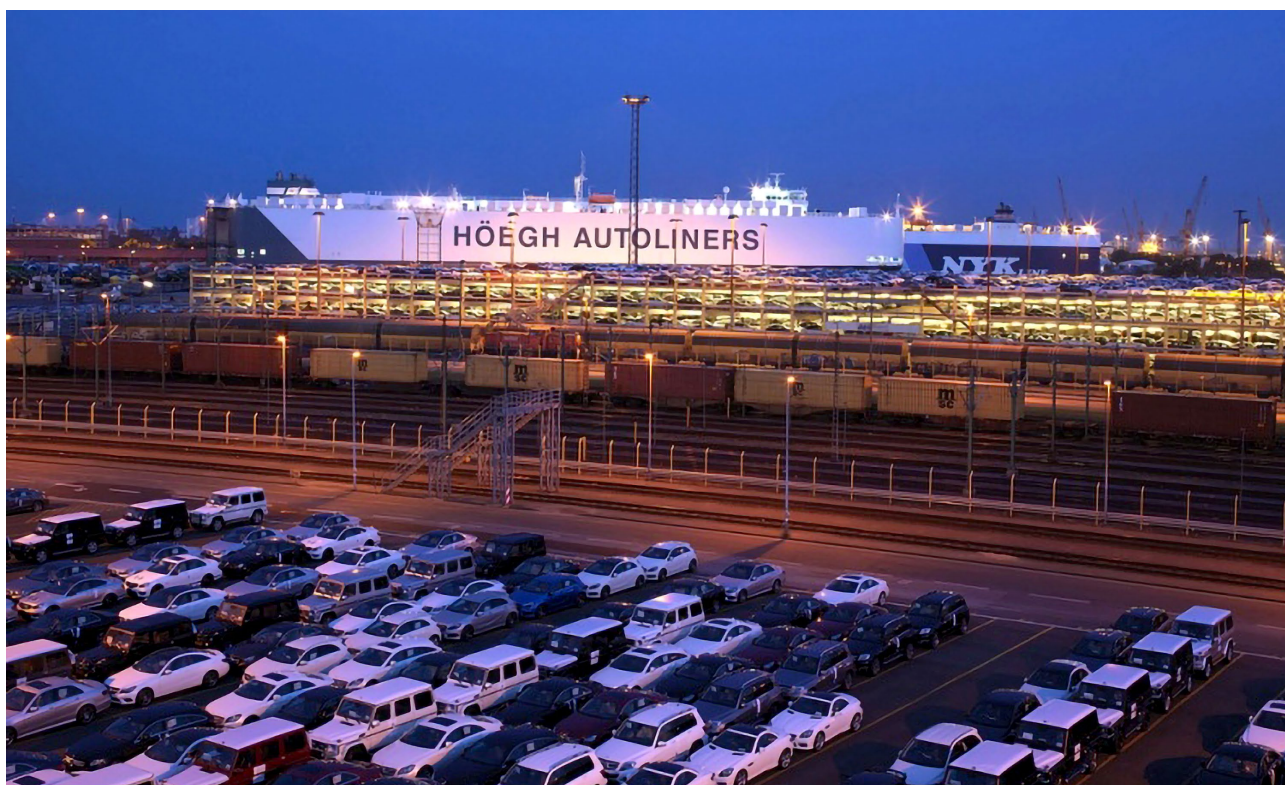




**NATIONAL & INTERNATIONAL
TRUCKING & FORWARDING**



CONTAINER TRANSPORTATION



SEA TRANSPORTATION

Certificate

Standard
ISO 9001:2015 and ISO 14001:2015

Certificate Registr. No. **01 100 1900059 and 01 104 1900059**

Certificate Holder:

BLG Automobile Logistics GmbH & Co. KG (ZEN-L)
Präsident-Kennedy-Platz 1 A
D - 28203 Bremen
including the locations according to annex

Scope:

A Logistics:
Development and implementation of logistic, technical and forwarding services and products, related to the automobile.

B Break Bulk Logistics:
Execution of services for companies, in the form of handling and storage of XXL goods such as machinery, equipment, large vehicles, containers, project and heavy lift cargo, steel products, forest products and other general and heavy lift cargo.

C Motor Vehicle Workshop
Carrying out and providing preventive and corrective maintenance, such as maintenance, inspection, repair, painting, as well as installation and handling of accessories/spare parts on motor vehicles (combustion engines).

D Technic Center
Carrying out and providing preventive and corrective maintenance, such as maintenance, inspection, repair, painting, as well as installation and handling of accessories/spare parts on motor vehicles (combustion engines).

D+ Technic Center
Scope D to HV motor vehicles (electric, hybrid, fuel cells).

E Waggon Services
Carrying out and providing initial inspections, as well as preventive and corrective maintenance, such as maintenance, inspection, repair and painting work on third-party and own wagons (rail vehicles).

F Waggon Operator
Ownership, operation, planning and operation of own wagons in the rail network in Europe.

Proof has been furnished by means of an audit that the requirements of ISO 9001:2015 and of ISO 14001:2015 are met.
The certificate is valid from 2021-10-01 until 2024-03-31.

Validity:

2021-09-24

Kühls
TÜV Rheinland Cert GmbH
Am Grauen Stein - 51105 Köln

www.tuv.com

IAF
INTERNATIONAL
ACCREDITED

DAKKS
DEUTSCHE
AKKREDITIERUNGSGESELLSCHAFT
D-50669 KÖLN

TÜVRheinland®
Precisely Right.

Annex to certificate

Standard
ISO 9001:2015

Certificate Registr. No. **01 100 1900059**

| | | | |
|-------------|---|-------------|--|
| /015 A | BLG AutoTransport GmbH & Co. KG Zweigniederlassung Neuss Fioßhafenstr. 30 DE-41460 Neuss | /016 A/C | BLG AutoTransport GmbH & Co. KG Zweigniederlassung Paderborn Halberstädter Str. 31 DE-33106 Paderborn |
| /017 A | BLG AutoTransport GmbH & Co. KG Zweigniederlassung Schöps Altenfelder Str. 1 DE-07768 Schöps (Jena) | /018 A/C | BLG AutoTransport GmbH & Co. KG Zweigniederlassung Wallenhorst Zoppelerstr. 11 DE-49134 Wallenhorst |
| /019 A | BLG CarShipping Koper d.o.o. Ankarska cesta 5c SI-6000 Koper | /020 A/F | BLG AutoRail GmbH Rheinufer 11 DE-55252 Mainz-Kastel |
| /021 E | BLG RailTec GmbH Mainzer Str. 1 DE-04936 Uebigau-Wahrenbrück | /022 A | BLG Logistics Automobile SPB - SPB Office Capasakaya Ul. 5, section A RU-198035 Sankt Petersburg |
| /023 A | BLG Logistics Automobile SPB - Moscow Branch Malyy Kiselevy pereulok building 1/9 office 202 RU-107031 Moscow | /024 A | BLG AutoTerminal Gdańsk Sp. z o.o. Ul. Przemysłowa 20 PL-80542 Gdańsk |
| /025 A/B | BLG Cargo Logistics GmbH Senator-Bottscheller-Str. 1 Terminal 21 DE-28197 Bremen | /026 A | BLG AutoTerminal Deutschland GmbH & Co. KG Betriebsstätte Dodendorf E-H-Harme-Weg 1 DE-39171 Dodendorf |

2021.09.24

Kühls
TÜV Rheinland Cert GmbH
Am Grauen Stein - 51105 Köln

Page 2 / 2

www.tuv.com

TÜVRheinland®
Precisely Right.

QUALITY AT FIRST -
REGULAR INTERNAL AUDITS
AND STAFF TRAININGS



FOR FURTHER INFORMATION PLEASE CONTACT:



MURAT ABOEV

GENERAL
DIRECTOR

Gapsalskaya street 5
section B, office 610
198035, Saint Petersburg
Russia

Tel. Russia: +7 (812) 495 88 40
Mob. Russia: +7 (911) 795 10 80

m.aboev@blg.de



SERGEJ PRIC

DIRECTOR SALES
AND TRANSPORTATION

Maliy Kiselnyi pereulok
building 1/9, office 201
107031, Moscow
Russia

Tel. Russia: +7 (495) 111 01 12
Mob. Russia: +7 (965) 139 85 60
Mob. Germany: +49 151 46 722 104

sergej.pric@blg.de

NOTES

[illegible]

YOURS. GLOBALLY



BLG LOGISTICS AUTOMOBILE SPB

Gapsalskaya Ul. 5, section A
198035 Sankt Petersburg
tel. +7 (812) 495 88 40

MOSCOW BRANCH

Maliy Kiselnyi per. 1/9, office 201
107031 Moscow
tel. +7 (495) 111 01 02

www.blg-logistics.com

